

# **The Plan for Forensic Patients in Maine**

**Maine Department of Health and  
Human Services**

# Objectives for Success

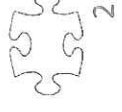
Enhanced Treatment

Enhanced Security

Fiscal Management

---

- **Enhanced Treatment**
  - Providing the highest level of care to both civil and forensic patients
- **Enhanced Security**
  - Addressing the needs of the judicial process while also providing a safe environment for clients and staff
- **Fiscal Management**
  - Changing the system will provide savings to Maine's taxpayers



# Barriers and Challenges

Consent Decree

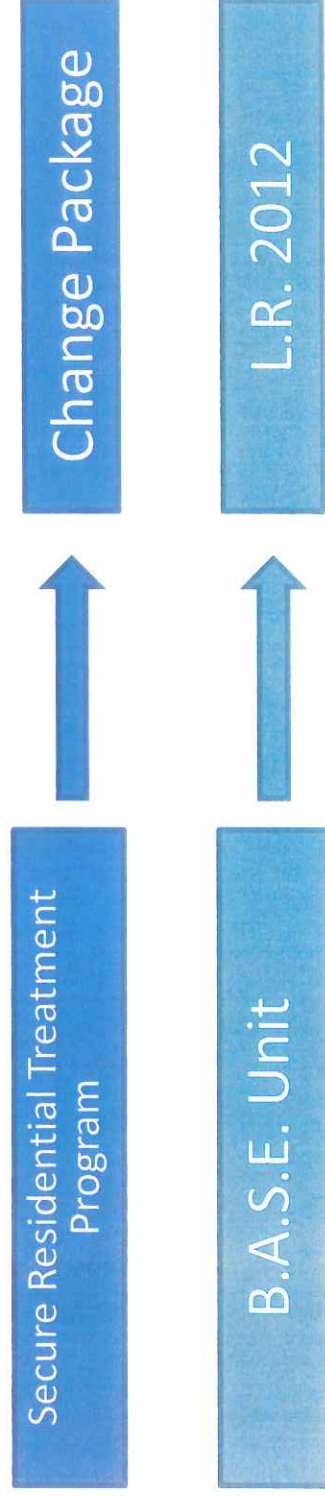
Safety

Funding and CMS

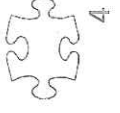
- **Consent Decree**
  - Patients sent to Riverview immediately become class members and have elevated levels of treatment, care, and are significantly more expensive to treat
- **Safety**
  - Patients and staff have a right to a safe environment
- **Funding and CMS**
  - Any proposed solution will have a price tag associated with it
  - CMS has been moving the goalposts and the funding being provided can disappear at any time



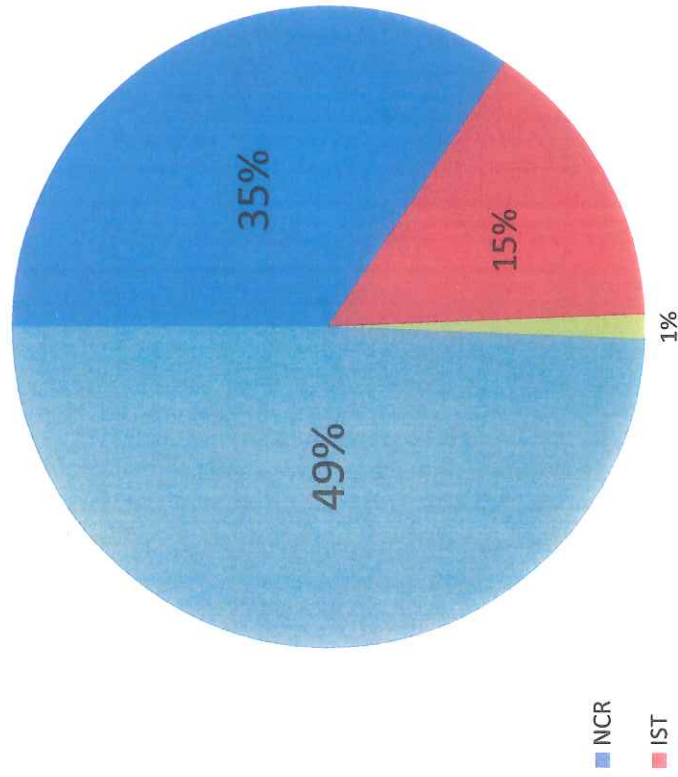
# Proposed Solutions



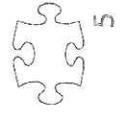
- 
- **Secure Residential Treatment Program**
    - Addresses the NCR population which does not require a hospital level of care
    - \$600 per day per patient versus the \$1,200 per day per patient at Riverview
  - **Behavioral Assessment Safety Evaluation (B.A.S.E.) Unit**
    - Addresses the ongoing safety issues and complaints that have been made by CMS in certifying Riverview as a hospital
    - ISTs, NCRs, Jail Transfers



# Riverview Population



- NCR 28
- IST 12
- 60 Day Evals 1
- Jail Transfer 0
- Civil Patients 40
- **TOTAL 81**



# Secure Residential Treatment Program

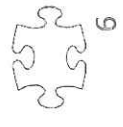
- Change Package request in Biennial Budget
- Two seven-bed secure residential facilities
- 14 of the 28 individuals currently at Riverview that are Not Criminally Responsible (NCR) and do not require a hospital level of care
- Current annual cost: **\$6,132,000**
- Proposed annual cost: **\$3,066,000**

• Less Restrictive Care

• Lower Costs

• Addresses CMS Issues

• Enhanced Safety and Security

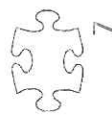


# B.A.S.E. Unit

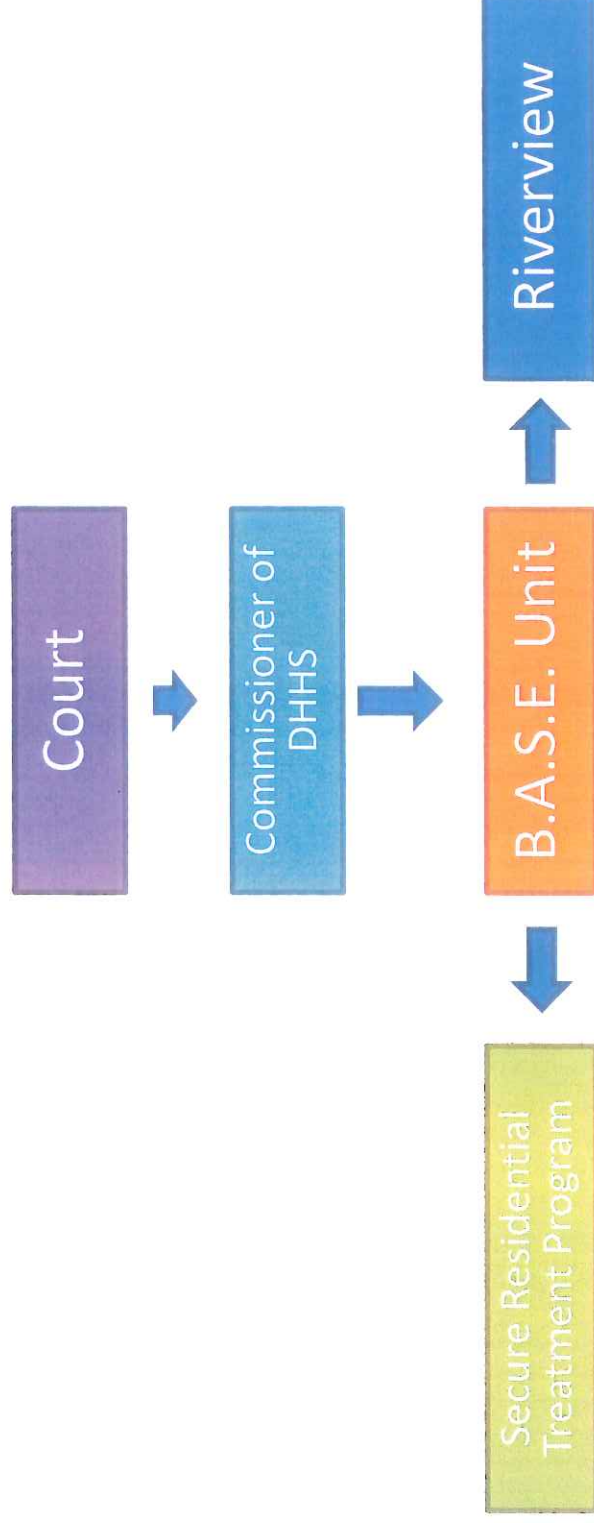
- L.R. 2012 – Sponsored by Rep. John Martin
- 50-bed secure facility for individuals that are Incompetent to Stand Trial (IST) or awaiting/going through court-ordered evaluation
- Prevents co-mingling of civil and forensic patients and allows for proper assessment of patient needs
- Proposed annual cost: **\$18,500,000**

- Provides Maine Courts a place to send individuals for evaluation

- Reduces burden on County jails
- Enhanced Safety and Security for Patients and Staff



# A New Path for Forensic Patients



- Forensic patients will only go to Riverview after a safety assessment is completed and they require hospital level of care
- NCRs that do not need a hospital level of care will go to the Secure Residential Treatment Program once they are deemed safe